

Ejercicios de Intervalos de Tercera

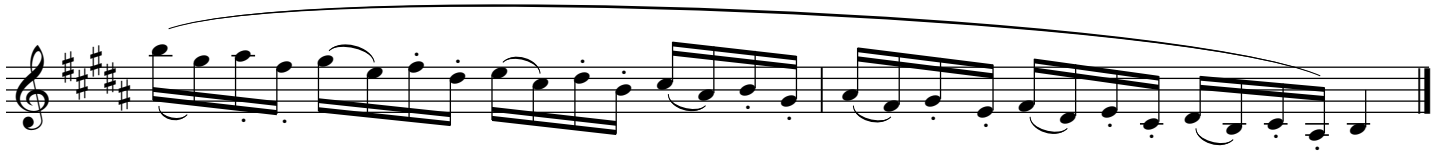
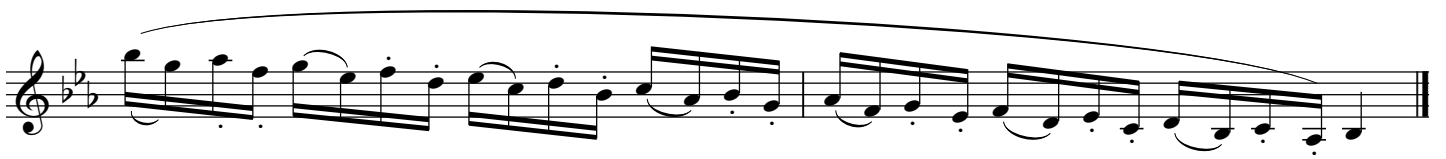
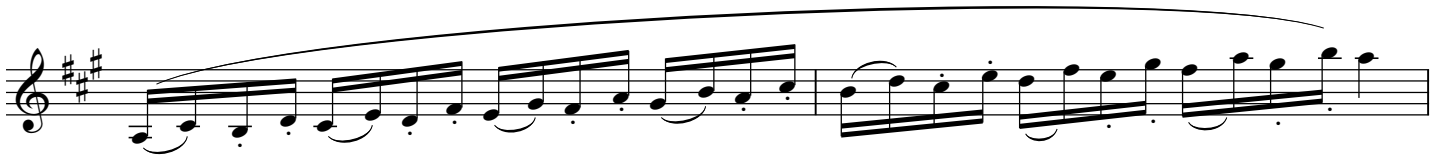
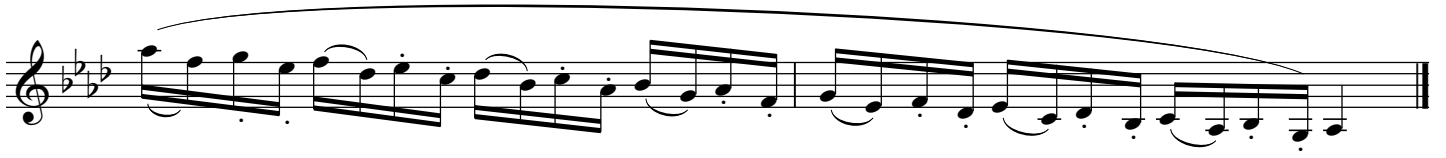
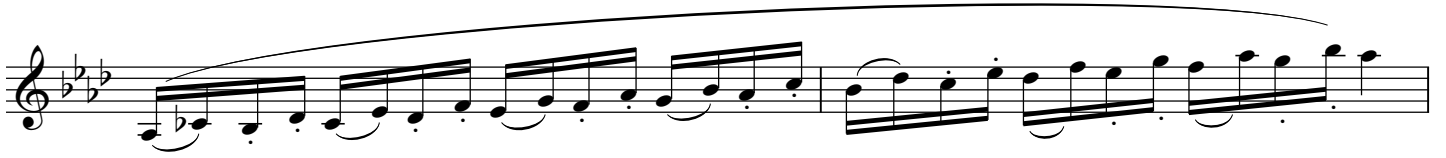
sobre escalas mayores

♩ = 60 - 120



mf







This page contains eight staves of musical notation, likely for a clarinet. The notation is organized into four pairs of staves. Each pair consists of a treble clef staff and a bass clef staff. The first pair (staves 1-2) is in the key of D major (one sharp). The second pair (staves 3-4) is in the key of B major (two sharps). The third pair (staves 5-6) is in the key of G major (one sharp). The fourth pair (staves 7-8) is in the key of E major (three sharps). Each staff contains a melodic line with various rhythmic values, including eighth and sixteenth notes, and rests. Long, sweeping lines above the staves indicate phrasing or breath marks. The notation is clean and professional, typical of a music score.