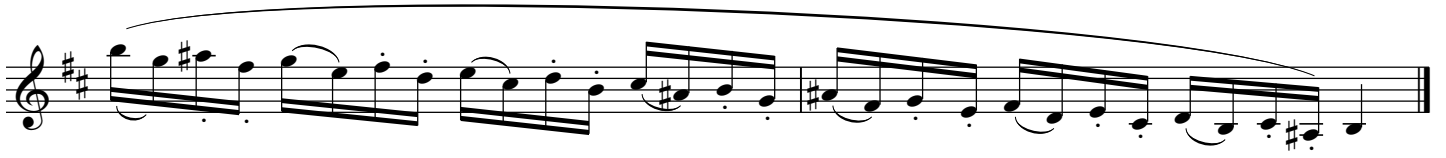


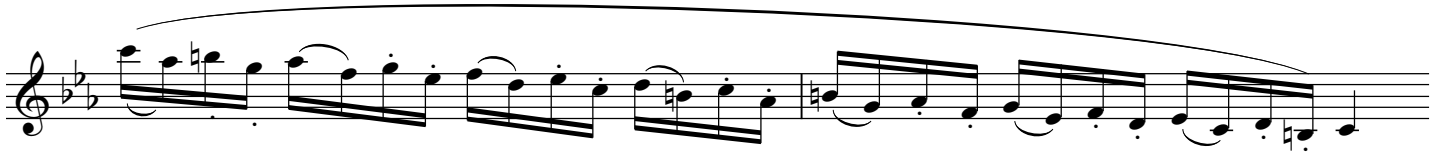
Ejercicios de Intervalos de Tercera

sobre escalas menores

♩ = 60 - 120

The image contains eight staves of music, each representing a different minor scale. Each staff begins with a treble clef and a 4/4 time signature. The first two staves are in the key of D minor (one sharp, F#), and the remaining six staves are in the key of Bb minor (two flats, Bb and Eb). The first staff includes a dynamic marking of *mf*. The music consists of two phrases per staff, each starting with a half note followed by eighth notes. The first phrase is an ascending eighth-note scale, and the second phrase is a descending eighth-note scale. The notes are beamed together in pairs, and each phrase is enclosed in a slur. The scales are: D minor (D, E, F, G, A, Bb, C, D), E minor (E, F, G, A, Bb, C, D, E), F minor (F, G, Ab, Bb, C, D, Eb, F), G minor (G, Ab, Bb, C, D, Eb, F, G), A minor (A, B, C, D, E, F, G, A), Bb minor (Bb, C, D, Eb, F, G, Ab, Bb), C minor (C, D, Eb, F, G, Ab, Bb, C), and D minor (D, E, F, G, A, Bb, C, D).





This page contains eight staves of musical notation, each representing a different key signature. The notation is written in a single melodic line on a five-line staff with a treble clef. The notes are connected by a long, sweeping slur that spans the entire length of each staff. The key signatures, from top to bottom, are: one sharp (F#), two sharps (F# and C#), three sharps (F#, C#, and G#), two sharps (F# and C#), one sharp (F#), one flat (Bb), two flats (Bb and Eb), and three flats (Bb, Eb, and Ab). The music consists of eighth and sixteenth notes, often beamed together, with some notes marked with accents. The overall style is that of a technical exercise or a short piece for a clarinet.